



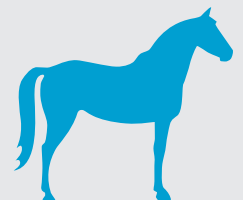
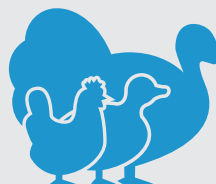
V For *in vitro* Veterinary
Diagnostics only.

Kylt[®]

Kylt[®] IVA beta

Real-Time RT-PCR Detectionkit for the detection of
Influenza Virus Type A

www.kylt.eu



Kylt[®] IVA beta

Real-Time RT-PCR Detectionkit for the detection of Influenza Virus Type A

| Revision No. | Amendments |
|--------------|---|
| 006 | Changed Company name and adjusted layout of the test evaluation |
| 005 | Layout, samples from horses, storage temperature |

A. General

- Kylt[®] IVA beta RT-qPCR kits are intended for the specific detection of viral RNA of Influenza Virus Type A (IVA). The kits are suitable for the analysis of samples from birds, wild birds, swine and horses, such as swab samples (e.g. nasal, vaginal, cloacal), tissues and organs (e.g. trachea, lung, cecal tonsils), saliva- and BAL-samples (BALF / bronchoalveolar lavage fluid, swine only), feces and samples from cultural processes with the aforementioned sample material (e.g. cell culture supernatant, allantoic fluid).
- The qualitative testing with Kylt[®] IVA beta RT-qPCR kits is based on a duplex Real-Time RT-PCR: In one reaction setting, the RNA target sequences for Influenza Virus Type A as well as for the endogenous control (beta-Actin) are reverse transcribed (Reverse Transcription (RT)) and amplified in parallel with respective primer pairs in the Polymerase Chain Reaction (PCR). Amplified target gene fragments are detected via fluorescently labeled probes during the PCR reaction in real-time (Real-Time PCR). The probes specific for detection of amplified Influenza Virus Type A and the endogenous control target genes are labeled with fluorescent dyes FAM and HEX, respectively, and their emitted fluorescence is separately optically measured by the Real-Time PCR thermal cycler. By means of both individual analyses in one reaction vessel per sample and the Negative Control and Positive Control per run the IVA-specific status of a sample can be evaluated in the end. This way, results can be achieved within a few hours after sample receipt.
- These kits were developed for use by trained laboratory personnel following standardized procedures. This Direction For Use must be followed strictly.

B. Reagents and Materials

- The following Kylt® IVA beta RT-qPCR kits are available and comprise the following reagents:

| Reagent | Colour of Lid | 100 Reactions Article No 31163 | 25 Reactions Article No 31164 | Store at |
|------------------|---------------|---|---|----------|
| 2x RT-qPCR-Mix | ○ transparent | 4 x 280 µl | 1 x 280 µl | ≤ -18 °C |
| Detection-Mix | ● green | 4 x lyophilizate (final 150 µl each) | 1 x lyophilizate (final 150 µl each) | ≤ -18 °C |
| Positive Control | ● red | 4 x lyophilizate (final 50 µl each) | 2 x lyophilizate (final 50 µl each) | ≤ -18 °C |
| Negative Control | ● blue | 1 x 1 ml | 1 x 1 ml | ≤ -18 °C |

- After receipt, the components are immediately stored at ≤ -18 °C. Avoid repeated freezing and thawing of all the reagents and keep them thawed as short as possible.
- If occasional processing of few samples only is expected you may prepare appropriate aliquots of reagents before storage at ≤ -18 °C. Prepare aliquots in such a way that freeze-thaw-cycles are reduced to a maximum of three. The Negative Control can alternatively be stored at +2°C to +8°C.
- The components are to be used within the indicated shelf life (see box label). The components of different batches may not be mixed.
- Before its first use, rehydrate the Positive Control: add 50 µl of Negative Control per vial, briefly incubate at room temperature and mix thoroughly by repeated vortexing. It is recommended to generate aliquots of suitable volumes and store them at ≤ -18 °C. The Positive Control contains target gene copies for both the specific channel to detect Influenzavirus Type A as well as for the Internal Control channel to detect beta-Actin.
- The Detection-Mix needs to be stored protected from abundant light. Do not expose to direct (sun)light. Before first use, rehydrate the lyophilized Detection-Mix: add 150 µl of the Negative Control per vial of Detection-Mix, briefly incubate at room temperature and mix by pulse-vortexing. Generate aliquots of suitable volumes and store them at ≤ -18 °C.
- The reagents can be used to prepare and use a larger stock of Master-Mix, refer to point 5 in chapter 3 "Reaction Setup and Amplification".

C. Equipment and Reagents not included

- This detection method can be used on all commercially available Real-Time PCR thermal cyclers that detect the emitted fluorescence of the fluorescent dyes FAM and HEX (emission 520 and 550 nm , respectively). Note that default normalization option against ROX (e.g. using ABI cyclers) must be deactivated.
- Apart from the disposables, the following further devices are needed and are not included in the Kylt® IVA beta RT-qPCR kits:
 - RNA preparation kit / protocol (e.g. Kylt® RNA / DNA Purification products)
 - Table top microcentrifuge
 - Vortex
 - Micropipettes covering volumes of 1 µl to 1000 µl
 - Centrifuge for PCR tubes or plates

- Accessory Kylt® products: see chapter F “Related and Accessory Products”.
- We recommend the exclusive use of certified Nuclease-free disposables as well as powder-free protective gloves. Please wear gloves during the entire experimental procedure. Gloves need to be changed frequently, especially after spillage or suspected contaminations.

D. Control Reactions

- The Positive Control allows for control of the specificity and efficiency of the reagents and the reaction itself, including the performance of RT and Real-Time PCR and of the Real-Time PCR thermal cycler.
- The Negative Control allows for exclusion of contaminations. The sample testing is only valid if both, Positive and Negative Controls, are used and verified for validity in every Real-Time PCR run.
- The Internal Control is based on detection of beta-Actin RNA, which is ubiquitous in the cells of the host that the sample is derived from. The beta-Actin RNA/endogenous RNA target gene is co-amplified (channel HEX) with every single reaction and allows for evaluation of sufficient sampling, sample storage and shipment, sample preparation and the Real-Time RT-PCR run itself.
- It is recommended to run one or more of a RNA Isolation Control (RIC) per set of RNA preparation, depending on the total number of samples processed at once. The RIC is a “mock sample” composed of the plain sterile buffer used for raw sample processing. It is randomly placed between the samples, processed like a normal sample and allows to detect potential contaminations of the reagents used (additionally to the Negative Control reaction) as well as for the detection of potential carryover contaminations between individual samples, e.g. during the RNA preparation process.
- The Kylt® Influenza Virus A Standard supports pathogen quantification for respective samples. By this, together with defined cut-off values, the clinical relevance of detected pathogen can be evaluated. Please refer to the respective Direction For Use for further instructions and to chapter F “Related and Accessory Products” for ordering information.

E. Protocol *(see also „Protocol At A Glance“ at the end of this Direction For Use)*

- The overall protocol of the analysis consists of the following main workflow:
 1. Sample Preparation
 2. RNA Preparation
 3. Reaction Setup, Reverse Transcription and Amplification (Real-Time RT-PCR)
 4. Data Analysis – Validity and Qualitative Result
- We recommend proceeding through the protocol without interruption to avoid potential degradation of the processed samples and reagents. If necessary, you may store the final RNA preparation at $\leq -18\text{ °C}$ or $\leq -70\text{ °C}$ until further processing. Avoid repeated freezing and thawing of the RNA preparations.

1. Sample Preparation

- We recommend pooling of at most five samples or samples from five individuals, respectively, per RNA preparation.
- Pool swabs in a sufficient volume of sterile buffer (e.g. 1 ml of Normal Saline or 0.1 x TE), let the swabs soak for an adequate period of time and finally wash out the swabs by thorough pulse-vortexing. The washed out supernatant is used for RNA preparation.
- Tissue and organ samples are homogenized thoroughly in sterile buffer (see above) and a suitable volume is used for the RNA preparation.
- Material derived from cultural processes, i.e. cell culture supernatant or allantoic fluid, can be used directly for RNA preparation.

2. RNA Preparation

a) Kylt® RNA Preparation (requires Kylt® RNA / DNA Purification products (available separately))

- For detailed information on the RNA preparation process please refer to the manual of Kylt® RNA / DNA Purification products.

b) RNA Preparation by other Methods

- Other kits or in-house methods to purify RNA may be used, as long as the quality leads to satisfactory amplification and detection of the Internal Control RNA.

3. Reaction Setup and Amplification (Real-Time RT-PCR)

- Before each use, briefly vortex and spin down the 2x RT-qPCR-Mix, rehydrated Detection-Mix and Negative Control.
- To determine the total number of reactions needed, count the number of samples and add two more for the Negative Control and the Positive Control (and RIC(s), if processed). In case of application of Kylt® Influenza Virus A Standard add appropriate numbers of reactions, please refer to respective Direction For Use.
- Prepare the Master-Mix using the components listed below. A larger volume of a ready to use Master-Mix can be prepared and stored at ≤ -18 °C for convenient use over a longer period of time up to the expiry date given on the label. In case of frozen storage the Master-Mix should be aliquoted in such a way that freeze-thaw-cycles are reduced to a maximum of three.
- Vortex, spin down and add 16 μ l of the finalized Master-Mix to each of the PCR tubes or plate wells ("cavities").

| Reagent | Volume (μ l) | |
|---|-------------------------------|--|
| | per Reaction | e.g. n=7 |
| 2x RT-qPCR-Mix | 10 μ l | 70 μ l |
| Detection-Mix | 6 μ l | 42 μ l |
| Total Master-Mix | 16 μl | 112 μl dispense 16 μ l per reaction |
| RNA (Negative Control / sample RNA / RIC(s) / Positive Control) | 4.0 μ l | |
| Total Reaction | 20.0 μl | |

- Alternatively, it is possible to prepare a larger volume of ready to use Master-Mix. This Master-Mix can be stored at ≤ -18 °C for at least six months. The Master-Mix should be aliquoted in suitable volumes to avoid more than three freeze-thaw-cycles.
- Keep exposure of the 2x RT-qPCR-Mix, Detection-Mix and prepared Master-Mix to (sun)light as short as possible and return it back to appropriate storage temperature right after application. Avoid the formation of bubbles when pipetting the Master-Mix, samples and controls.
- Add 4 μ l of the Negative Control to the corresponding cavity and seal it individually, if possible.
- Add 4 μ l of each RNA preparation (including RIC(s), if processed) to the corresponding cavities and seal them individually, if possible.
- To minimize risk of potential cross-contaminations, 4 μ l of the Positive Control are added to the corresponding cavity after all previous samples and control reactions are set up. Before each use, briefly vortex and spin down the rehydrated Positive Control (see also chapter B “Reagents and Materials”).
- If not already done, finally seal the cavities. It is recommended to briefly spin them down before the start of the Real-Time PCR run.
- Place the cavities in the Real-Time PCR thermal cycler and run the test with Kylt® Profile I as given below.

| Kylt® Profile I | | | | |
|-----------------|--------------------------|----------------------|----------|-------------|
| Step No | Description | Temperature | Duration | |
| 1 | Reverse Transcription | 50 °C | 10 min | |
| 2 | Activation of Polymerase | 95 °C | 1 min | |
| 3 | Denaturation | 95 °C | 10 sec | } 42 cycles |
| 4 | Annealing & Extension | 60 °C | 1 min | |
| 5 | Fluorescence Detection | channels FAM and HEX | | |

- Kylt® Profile I allows for combined run of this and most other Kylt® RT-qPCR detection methods as well as Kylt® PCR detection products.
- In the event of a combined Real-Time RT-PCR run, make sure all necessary channels are detected.
- Please follow the specified instructions of your Real-Time PCR thermal cycler as recommended by the manufacturer.

[4. Data Analysis – Validity and Qualitative Result](#)

General

- The amplification data can be processed automatically using the specific software tool of your Real-Time PCR thermal cycler. Alternatively, the threshold can be set manually considering the following directions: The threshold should cross the FAM-curve and the HEX-curve in the linear increase of their slope (log scaling of the y-axis). By setting the threshold, the crossing points with the HEX- and FAM-curves determine the respective cycle threshold (Ct), which is negatively correlated with the initial concentration of copies of the target genes in the Real-Time RT-PCR reaction.

- Only curves with the typical exponential amplification, meaning the curve of the raw data shows a flat baseline at the beginning, followed by a clear (exponential) slope in fluorescence and possibly reaching a plateau-phase (y-axis in log scaling), should be regarded as positive.
- The actual test analysis starts with the validity check of the entire Real-Time RT-PCR run. Afterwards, by means of the Internal Control the validity of each sample reaction and its true test result can be verified according to the Ct-value of the Internal Control channel (HEX). Finally, the IVA-specific status of each sample is analyzed (FAM).

Test Evaluation - Control Reactions

- The **Real-Time RT-PCR test run** is only **valid** if the curves of the control reactions can be evaluated as follows:

| Control Reactions | Channel | | | |
|-------------------|---------------------|---------|---------------------------------|------------------|
| | HEX (beta-actin) | | FAM (Influenza Virus Type A) | |
| Negative Control | negative | Ct > 35 | negative | Ct > 42 |
| Positive Control | positive | Ct ≤ 35 | positive | Ct > 15 and ≤ 35 |

- If one or more of a RNA Isolation Control (RIC(s)) is processed, its FAM- and HEX-curves must be negative (Ct > 35 for HEX-curves).

Test Evaluation - Samples

| Target | Channel | Signal | | |
|---|---------|-----------------|---------------------|------------------|
| Internal Control | HEX | positive | positive / negative | negative |
| Influenza Virus Type A | FAM | negative | positive | negative |
| The sample is Influenza Virus Type A | | negative | positive | inhibited |

- A **sample** is **negative for Influenza Virus Type A** if its HEX-curve is positive (Ct ≤ 35), but its FAM-curve is negative.
- A **sample** is **positive for Influenza Virus Type A** if its FAM-curve is positive (Ct ≤ 42), independent of the HEX-curve.
- A **sample** is **inhibited** if neither the FAM-curve nor the HEX-curve are positive.
- Recommendation:** In the case of an inhibited sample you may repeat the test by using e.g. 1:4 dilution of the respective RNA preparation. The Negative Control is used as the diluting agent. Preferably, the entire RNA preparation process is repeated using Kylt® RNA/DNA Purification products or appropriate alternative.
- Convenient and reliable sample data entry, Real-Time PCR start, final qualitative analysis and documentation can be conducted with the Kylt® Software, please inquire.

F. Related and Accessory Products

| Product | Article No | Reactions | Description |
|----------------------------------|------------|-----------|--|
| Kylt® RNA / DNA Purification | 31315 | 50 | Combined RNA and DNA purification from veterinary samples (spin-column based). |
| Kylt® RNA / DNA Purification HTP | 31826 | 4 x 96 | Magnetic bead based combined RNA and DNA purification kit for veterinary diagnostic samples. Suitable for Kylt® Purifier and Kylt® Purifier 48. |
| Kylt® Purifier | 31436 | 1 unit | Purification system for magnetic bead based kits. Up to 96 samples are processed in under 30 minutes. Intended for high-throughput laboratories. |
| Kylt® Purifier 48 | 31748 | 1 unit | Purification system for magnetic bead based kits. Up to 48 samples are processed in under 30 minutes. Intended for low to medium throughput laboratories. |
| Kylt® Purifier Spin Tips | 31434 | 5 Sets | Plate with 96 separate spin tips, used by the Kylt® Purifier to mix the well contents by stirring. Sufficient for 480 samples. |
| Kylt® Purifier Plates | 31435 | 20 Plates | Plates to be used for the several reactions and reagents during automated nucleic acid purification. Sufficient for 320 to 480 samples (depending on device and protocol). |
| Kylt® Influenzavirus A Standard | 31423 | 10 | To be used for pathogen quantification |

Production:

SAN Group Biotech Germany GmbH | Muehlenstr. 13 | 49685 Hoeltinghausen | Germany
www.kylt.eu | kylt-de@san-group.com

Development, manufacturing and distribution of Kylt® *In-Vitro* Diagnostica is certified according to ISO 9001:2015.

Kylt® is a registered trademark.

For veterinary use only. For *in vitro* use only. Regulatory requirements vary by country, not all of the products described herein may be available in your geographic area.

© 2023 SAN Group Biotech Germany GmbH. All rights reserved. The trademark mentioned herein is the property of SAN Group Biotech Germany GmbH or their respective owners.

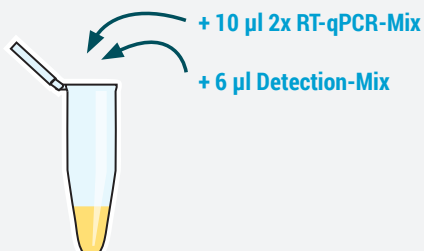


PROTOCOL AT A GLANCE

Real-Time RT-PCR Setup

1

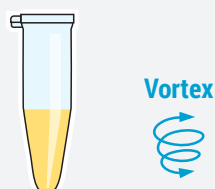
Prepare a Master-Mix*



* please refer to chapter 3

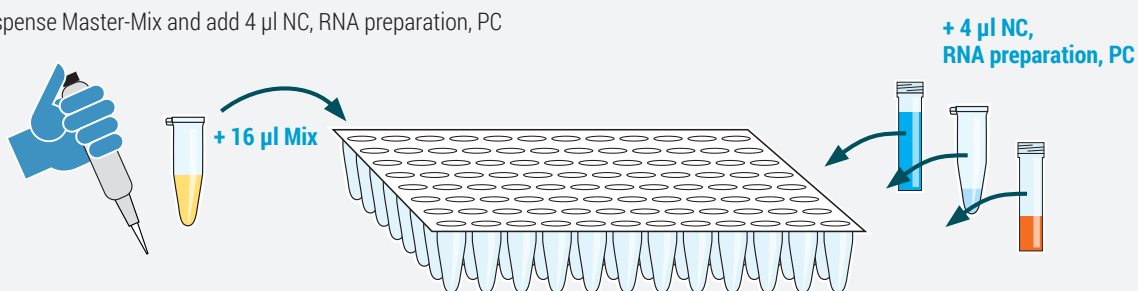
2

Pulse-vortex and spin down



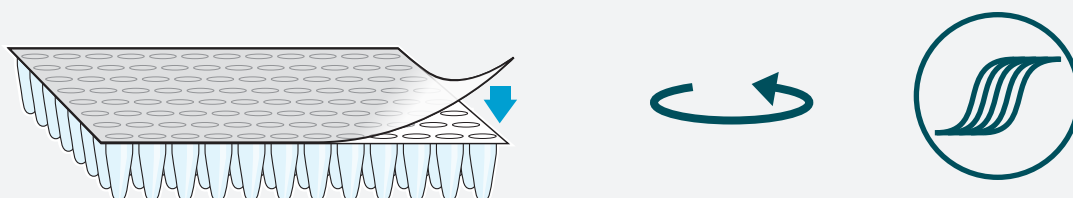
3

Dispense Master-Mix and add 4 µl NC, RNA preparation, PC



4

Seal cavities, spin down (recommended), and start cycler



5

Analysis

